

SINGLES®



RETRO-FIT AUTO-DARKENING LENSES

NOW WITH



 **WALTER**
Surface Technologies

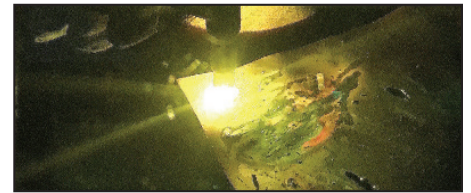


See color in its truest form with ArcOne's new HD Technology. This innovative technology increases the range of visible light when looking through the lens, and while welding. By increasing the range of light, more natural colors can be seen, providing a clearer, more defined view of your work area.

HD
S240

VS

NON-HD
LENS



NEW

SINGLES[®] duo

INTRODUCING THE SINGLES[®] DUO, THE SAME SINGLES[®] YOU KNOW AND LOVE, NOW WITH TWO SHADES!

Includes Two New Duo Shades 10/11 & 11/12

FEATURES:



SPECIFICATIONS:

PART #	S240-10/11 S240-11/12
LENS DIMENSION	2 x 4 1/4 x .25"
VIEWING AREA	5.25 Square Inches
SENSORS	2
LIGHT STATE	2.5
DARK STATE	10-11 or 11-12
GRIND	Yes
TIG RATING	50 Amps



Choose from the largest selection of auto-darkening lenses available in multiple sizes with varying options: shade, sensitivity and viewing area.

Whatever your requirements, ArcOne® can retro-fit your current helmet with the finest technology available.

HIGH DEFINITION OPTICS ON ALL SINGLES LENSES



SINGLES®										HD
PART #	DESCRIPTION & DIMENSIONS	LIGHT SHADE	DARK SHADE	SENSITIVITY	GRIND MODE	DELAY	TIG RATING	SEN-SORS	VIEWING AREA (SQ. IN.)	
S240-8	Singles HD 2x4" (2 x 4 1/4 x .2")	2.5	8	Fixed	N	N	50	2	5.25	
S240-9	Singles HD 2x4" (2 x 4 1/4 x .2")	2.5	9	Fixed	N	N	50	2	5.25	
S240-10	Singles HD 2x4" (2 x 4 1/4 x .2")	2.5	10	Fixed	N	N	50	2	5.25	
S240-11	Singles HD 2x4" (2 x 4 1/4 x .2")	2.5	11	Fixed	N	N	50	2	5.25	
S240-12	Singles HD 2x4" (2 x 4 1/4 x .2")	2.5	12	Fixed	N	N	50	2	5.25	
S450-9	Singles HD 4x5" (4 1/2 x 5 1/4 x .2")	2.5	9	Fixed	N	N	50	2	5.25	
S450-10	Singles HD 4x5" (4 1/2 x 5 1/4 x .2")	2.5	10	Fixed	N	N	50	2	5.25	
S450-11	Singles HD 4x5" (4 1/2 x 5 1/4 x .2")	2.5	11	Fixed	N	N	50	2	5.25	
S450-12	Singles HD 4x5" (4 1/2 x 5 1/4 x .2")	2.5	12	Fixed	N	N	50	2	5.25	
S540-9	Singles HD 5x4" (5 1/4 x 4 1/2 x .2")	2.5	9	Fixed	N	N	50	2	5.25	
S540-10	Singles HD 5x4" (5 1/4 x 4 1/2 x .2")	2.5	10	Fixed	N	N	50	2	5.25	
S540-11	Singles HD 5x4" (5 1/4 x 4 1/2 x .2")	2.5	11	Fixed	N	N	50	2	5.25	
S540-12	Singles HD 5x4" (5 1/4 x 4 1/2 x .2")	2.5	12	Fixed	N	N	50	2	5.25	





SINGLES® DUO

PART #	DESCRIPTION & DIMENSIONS	LIGHT SHADE	DARK SHADE	SENSITIVITY	GRIND MODE	DELAY	TIG RATING	SENSORS	VIEWING AREA (SQ. IN.)
S240-10/11	Singles Duo HD 2x4" (2 x 4 1/4 x .25")	2.5	10 & 11	Fixed	Y	N	50	2	5.25
S240-11/12	Singles Duo HD 2x4" (2 x 4 1/4 x .25")	2.5	11 & 12	Fixed	Y	N	50	2	5.25



SUPER SINGLES®

PART #	DESCRIPTION & DIMENSIONS	LIGHT SHADE	DARK SHADE	SENSITIVITY	GRIND MODE	DELAY	TIG RATING	SENSORS	VIEWING AREA (SQ. IN.)
SS240	Super Singles HD 2x4" (2 x 4 1/4 x .25")	3	10.5	Dual	Y	Y	25	2	5.25

INSIDE & OUTSIDE COVER PLATES FOR RETRO-FIT LENSES

PART #	COMPATIBLE LENS:
02-OP FOR INSIDE & OUTSIDE	S450 S540
03-OP FOR INSIDE & OUTSIDE	S240 S240-10/11 S240-11/12 SS240

STANDARD MAGNIFYING LENS
(Mag lens holder required)

PART #	DESCRIPTION
VML-100	1.00 Strength
VML-150	1.50 Strength
VML-200	2.00 Strength
VML-250	2.50 Strength

UNIVERSAL MAGNIFYING LENS
(Fits all manufacturer's mount helmets, kit is included)

PART #	DESCRIPTION
UML-100	1.00 Strength
UML-150	1.50 Strength
UML-200	2.00 Strength
UML-250	2.50 Strength
UML-300	3.00 Strength



SATISFACTION GUARANTEED!
3-year warranty on all ArcOne® Auto-Darkening lenses.



INSIDE SALES / CUSTOMER SERVICE:
TEL: 800-223-4685
FAX: 508-884-9666
ORDERS@ACEINTL.COM
WWW.ARC1WELDSAFE.COM



USA CUSTOMER SERVICE
TOLL FREE: 1 800-522-0321
FAX: 1 866-274-4435
ORDERDESK.US@WALTER.COM

TORONTO
TOLL FREE: 1 888-821-9444
FAX: 905-795-8558

MONTREAL
TOLL FREE: 1 800-363-7368
FAX: 514-630-2825
CSR@WALTER.COM
WWW.WALTER.COM

EDMONTON
TOLL FREE: 1 866-435-1271
FAX: 780-453-1589

VANCOUVER
TOLL FREE: 1 877-366-9258
FAX: 1 877-329-9258