



02

HEAD AND FACE PROTECTION



ArcOne®'s above-the-neck head and face protection solutions make safety accessible to every welder. Our solutions provide superior optical clarity and sensitivity and larger viewing areas to help increase welding quality and productivity without sacrificing safety.



AUTO-DARKENING PROTECTION

WELDING LENS SHADE SELECTION GUIDE

Choose the shade that's right for your welding application. Shade numbers are given as a guide only and may be varied to suit individual needs.

Process	Electrode size in inches (mm)	Arc current (Amperes)	Minimum protective Shade	Suggested shade No. (Comfort)
Shielded Metal Arc Welding (SMAW)	Less than 3/32 (2.4)	Less than 60	7	—
	3/32–5/32 (2.4–4.0)	60–160	8	10
	5/32–1/4 (4.0–6.4)	160–250	10	12
	More than 1/4 (6.4)	250–550	11	14
Gas Metal Arc Welding (GMAW) and Flux Cored Arc Welding (FCAW)		Less than 60	60	7
		60–160	10	11
		160–250	10	12
		250–500	10	14
Gas Tungsten Arc Welding (GTAW)		Less than 50	8	10
		50–150	8	12
		150–500	10	14
Air Carbon Arc (Light)		Less than 500	10	12
Cutting (CAC-A) (Heavy)		500–1000	11	14
Plasma Arc Welding (PAW)		Less than 20	6	6 to 8
		20–100	8	10
		100–400	10	12
		400–800	11	14
Plasma Arc Cutting (PAC)		Less than 20	4	4
		20–40	5	5
		40–60	6	6
		60–80	8	8
		80–300	8	9
		300–400	9	12
		400–800	10	14
Torch Brazing (TB)		—	—	3 or 4
Torch Soldering (TS)		—	—	2
Carbon Arc Welding (CAW)		—	—	14

PRO TIP!

As a rule of thumb, start with a shade that is too dark to see the weld zone. Then go to a lighter shade which gives sufficient view of the weld zone without going below the minimum.

The chart above is published in ANSI Z49.1 – “Safety in Welding, Cutting and Allied Processes” on AWS.org

NEW

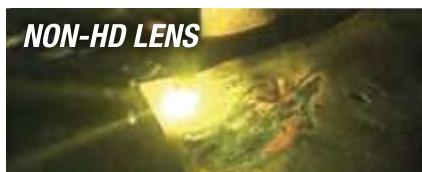


ARCONE® LENSES OFFER BETTER OPTICAL CLARITY, SO WELDERS CAN SEE COLORS LIKE THEY'VE NEVER SEEN BEFORE.

HD SINGLES LENS



NON-HD LENS



HD TECHNOLOGY

See color in its truest form with ArcOne®'s new HD Technology. This innovative technology increases the range of visible light when looking through the lens, and while welding. By increasing the range of light, more natural colors can be seen, providing a clearer, more defined view of your work area.

HD Technology allows a wider range of visible light on the color spectrum, versus True Color, which tends to be more on the blue side of the spectrum, showing a slightly blue tint when looking through the lens.

AUTO-DARKENING LENSES

Looking for an upgrade to your existing welding lens?

We've got you covered with the ArcOne® Singles Retro-fit Lens lineup.

- ▷ HD Technology
- ▷ Compatible with most 2 x 4 welding helmets
- ▷ Light shade of 2.5 provides clearer view when not in use
- ▷ Low power solar technology
- ▷ No battery changes. Ever.



SS240



S240-10/11



S240-10

Order No.	Description and dimensions	Light shade	Dark shade	Sensitivity	Grind mode	Delay	Tig rating	Sensors	Viewing area (sq. in.)
SINGLES®									
HIGH-DEFINITION TECHNOLOGY									
S240-8	Singles HD 2x4" (2 x 4 ¼ x .2")	2.5	8	Fixed	N	N	50	2	5.25
S240-9	Singles HD 2x4" (2 x 4 ¼ x .2")	2.5	9	Fixed	N	N	50	2	5.25
S240-10	Singles HD 2x4" (2 x 4 ¼ x .2")	2.5	10	Fixed	N	N	50	2	5.25
S240-11	Singles HD 2x4" (2 x 4 ¼ x .2")	2.5	11	Fixed	N	N	50	2	5.25
S240-12	Singles HD 2x4" (2 x 4 ¼ x .2")	2.5	12	Fixed	N	N	50	2	5.25
S450-9	Singles HD 4x5" (4 ½ x 5 ¼ x .2")	2.5	9	Fixed	N	N	50	2	5.25
S450-10	Singles HD 4x5" (4 ½ x 5 ¼ x .2")	2.5	10	Fixed	N	N	50	2	5.25
S450-11	Singles HD 4x5" (4 ½ x 5 ¼ x .2")	2.5	11	Fixed	N	N	50	2	5.25
S450-12	Singles HD 4x5" (4 ½ x 5 ¼ x .2")	2.5	12	Fixed	N	N	50	2	5.25
S540-9	Singles HD 5x4" (5 ¼ x 4 ½ x .2")	2.5	9	Fixed	N	N	50	2	5.25
S540-10	Singles HD 5x4" (5 ¼ x 4 ½ x .2")	2.5	10	Fixed	N	N	50	2	5.25
S540-11	Singles HD 5x4" (5 ¼ x 4 ½ x .2")	2.5	11	Fixed	N	N	50	2	5.25
S540-12	Singles HD 5x4" (5 ¼ x 4 ½ x .2")	2.5	12	Fixed	N	N	50	2	5.25
SINGLES® DUO									
HIGH-DEFINITION TECHNOLOGY									
S240-10/11	Singles Duo HD 2x4" (2 x 4 ¼ x .25")	2.5	10 & 11	Fixed	Y	N	50	2	5.25
S240-11/12	Singles Duo HD 2x4" (2 x 4 ¼ x .25")	2.5	11 & 12	Fixed	Y	N	50	2	5.25
SUPER SINGLES®									
HIGH-DEFINITION TECHNOLOGY									
SS240	Super Singles HD 2x4" (2 x 4 ¼ x .25")	3	10.5	Dual	Y	Y	25	2	5.25
TRADESMAN									
Entry-level 2 x 4 retrofit auto-darkening welding lens									
T240-10	Tradesman ADF 2x4	3	10	Fixed	N	N	50	2	5.25

AUTO-DARKENING LENSES

Order No.	Description and dimensions	Light Shade	Dark Shade	Sensitivity	Grind Mode	Delay	TIG Rating	Sensors	Viewing Area (sq. in.)
Professional-grade		Entry-level, for welders who occasionally grind. Best options for students!							
1000F	Shade Master® Professional-Grade True Color Technology	4	9-13	Variable	Y	Variable	25	2	6.0
4500V	Shade Master® Professional-Grade True Color Technology	4	9-13	Variable	Y	Variable	25	4	7.1
Digital industrial		Industrial-grade lenses for welders who perform diverse welding work, TIG weld and require clearest vision.							
X54V	5x4" Digital ASIC (5 ¼ x 4 ½ x .244")	4	9-13	Variable	Y	Variable	5	2	7.25
X54Vi	5x4" Digital ASIC HD (5 ¼ x 4 ½ x .267")	4	5-14	Variable	Y	Variable	5	4	7.25
HD digital industrial		Industrial-grade, for welders working on complex and varied projects. ArcOne®'s most premium lens.							
X81VX	Xtreme® Digital ASIC w/ X-TIG - HD 5x4" (5 ¼ x 4 ½ x .295")	3	5-14	Variable	Y	Variable	<5	5	12.6
XTREME®		Industrial-grade lenses for welders who perform different tasks, TIG weld and require a larger viewing area.							
X450V	Xtreme® 4x5" Variable (4 ½ x 5 ¼ x .267")	3	9-12	Variable	Y	Variable	5	4	12.6
BFF®		Industrial-grade; for welders working on complex and varied projects. This lens has the largest viewing area in its category.							
BFFVX	BFF® HD Lens with X-TIG (5 ¼ x 4 ½ x .374")	3	5-13	Variable	Y	2 delay settings: Delay 0.1 and 2 sec.	5	3	17

Order No.	Description and dimensions	Light shade	Dark shade	Sensitivity	Grind mode	Delay	Tig rating	Sensors	Viewing area
SHADE MASTER®		Professional European-model lens, smaller and lighter format							
5500V	Shade Master® ASIC - 110x90mm	4	5-14	8 Settings	Y	8 Settings	5	2	7.25
7500VX	"Shade Master® ASIC w/ X-TIG & HD - 110x90mm"	3	5-14	8 Settings	Y	8 Settings	<5	3	9.3



SEE COLOR IN ITS TRUEST FORM WITH ARCONE®'S HD TECHNOLOGY.

This innovative technology increases the range of visible light when looking through the lens, and while welding. By increasing the range of light, more natural colors can be seen, providing a clearer, more defined view of your work area.



REDUCE DOWNTIME SPENT SCRAPING SPATTER & REPLACING WELDING NOZZLES



WALTER'S 5X LONGER-LASTING CERAMIC-COATED NOZZLES
WILL **REDUCE YOUR OPERATION COSTS!**

See page 39 for all available models

WELDING HELMET SERIES

Every welder is different. That's why we offer a wide selection of lens options, all specifically designed to help you optimize your welding productivity.

HAWK® WELDING HELMET SERIES

The Hawk® provides excellent head, neck and ear coverage.

▷ Can be retrofit with any ArcOne® Singles Lens



SATISFACTION GUARANTEED!

3-year warranty on all ArcOne® Auto-Darkening lenses.




CARRERA™ WELDING HELMET SERIES

The Carrera™ ArcOne® helmet is ultra-light, and has a sleek, modern wider-fit design.

▷ Built with many features from the premium welding hoods, but designed with budget in mind

▷ Wider fit can accommodate half-mask respirators



Order No.	H-0300	S240-10-0300	S240-10/11-0300 S240-11/12-0300	SS240-0300	1000F-0100	4500V-0100
Best for:	Passive lens for the occasional welder, DIY	Entry-level for the occasional welder, students, DIY			Entry-level for the occasional welder, students, DIY	
Viewing Area	8.5 sq. in	5.25 sq. in	5.25 sq. in	5.25 sq. in	6 sq. in	7.1 sq. in
HD Technology						
Light Shade		2.5	2.5	2.5	4	4
Dark Shade	10	10	10-11 11-12	10	9-13	9-13
Variable Sensitivity				✓	✓	✓
Variable Delay				✓	✓	✓
X-TIG®						
Cut & Grind Mode			✓	✓	✓	✓
TIG Rating		50 amps	50 amps	25 amps	25 amps	25 amps
Arc Sensors	n/a	2	2	2	2	4
Digital						
Solar powered		✓	✓	✓	✓	✓

Viewing Area: The total area through which the user can see. Larger viewing areas tend to be preferable for welding in different positions or all-day use because they increase peripheral vision.

HD Technology: This innovative technology increases the range of visible light seen through the lens providing a clearer, more defined view of the work area.

Light State: The shade when the welding filter is not welding. The lighter the light state, the better the welder can see his/her work area.

Dark State: The range of shades that determine how dark the filter will get when the arc is struck. Required darkness depends on the welding application.

Variable Sensitivity: Welding lens feature that allows the user to set the sensitivity of the sensors. High sensitivity is required for low-light or low amperage applications; Low Sensitivity is ideal for intense light- or high-amperage applications.

Variable Delay: Lens feature that allows the welder to set the number of seconds it takes the lens to switch back to its light shade after the weld is complete.

VISION® WELDING HELMET SERIES

The Vision® helmet is light, slim and will fit into tight areas, all while offering optimal face, ear and neck coverage.

- ▷ **Best-in-class optical clarity and sensitivity**
- ▷ **Patented cover plate quick-change system**
- ▷ **Dust and water resistance**
- ▷ **Meet ANSI and CSA standards**

ORBIT™ WELDING HELMET

Three high-definition auto-darkening lenses provide optimal peripheral vision

- ▷ **24-square-inch viewing area thanks to 3 lenses that improve peripheral view of surroundings**
- ▷ **Wider-fit design made for comfortable welding**



Order No.	V-1500	1000F-1500	4500V-1500	X54V-1500	X54VI-1500	X81VX-1500	BFFVX-1500	BFFVX3-1800
Best for:	Passive lens for the occasional welder, DIY	Entry-level for the occasional welder, students, DIY		Professional for the everyday welder		Industrial for the everyday welder working on different types of complex projects		Industrial-grade; for welders needing great peripheral vision
Viewing Area	25.5 sq. in	6 sq. in.	7.1 sq. in.	7.25 sq. in.	7.25 sq. in.	12.6 sq. in	17 sq. in	24 sq. in. (17.05 main, 2 x 3.5 sq. in ADF side-lenses)
HD Technology				HD	HD	HD	HD	HD
Light Shade		4	4	4	4	3	3	3
Dark Shade	10	9-13	9-13	9-13	5-14	5-14	5-13	5-13
Variable Sensitivity		✓	✓	✓	✓	✓	✓	✓
Variable Delay		✓	✓	✓	✓	✓	✓	✓
X-TIG®						✓	✓	✓
Cut & Grind Mode		✓	✓	✓	✓	✓	✓	✓
TIG Rating		25 amps	25 amps	5 amps	5 amps	< 5 amps	5 amps	< 5 amps
Arc Sensors	n/a	2	4	2	4	5	3	3
Digital				✓	✓	✓		✓
Solar powered		✓	✓	✓	✓	✓	Solar/USB rechargeable battery	Solar/USB rechargeable battery

X TIG®: A mode designed for welding in an environment with obstructed views. Sensors are triggered by the electromagnetic field created when welding.

Cut & Grind Mode: Ideal if you frequently switch between welding, cutting, or grinding.

Tig Rating: The minimum light or amperage for which the auto-darkening lens will activate.

Arc Sensors: An increased number of arc sensors makes the lens more sensitive and provides better lens response.

Digital: Whether or not the auto-darkening lens has a digital display.

Solar Powered: Whether or not the lens has a solar battery. ArcOne®'s Vision® BFFVX hood can last up to 6 months on a single charge.

HAWK® WELDING HELMET SERIES



The Hawk® is perfect for general welding applications. It is one of the lightest helmets, comfortable for all-day use. The Hawk® provides excellent head, neck, and ear coverage.

HAWK® BENEFITS

- ▷ 2x4" viewing area
- ▷ 03-OP outside and inside cover plate
- ▷ 04-HG replacement headgear
- ▷ Can be retrofit with any ArcOne® Singles lens
- ▷ HD Technology
- ▷ Good face, ear and neck face coverage
- ▷ Lightweight hood
- ▷ Wide fit, can be worn with glasses underneath

ALL HAWK® HOODS INCLUDE

3

YEARS WARRANTY

HD

HD Technology

Solar-powered

On all auto-darkening lenses

Order No.	S240-10-0300	S240-10/11-0300	S240-11/12-0300	SS240-0300
Viewing Area	5.25 sq. in	5.25 sq. in	5.25 sq. in	5.25 sq. in
HD Technology				
Light Shade	2.5	2.5	2.5	2.5
Dark Shade	10	10-11	11-12	10
Variable Sensitivity	Fixed Sensitivity	Fixed Sensitivity	Fixed Sensitivity	Dual Sensitivity
Variable Delay				✓
Cut & Grind Mode		✓	✓	✓
TIG Rating	50 amps	50 amps	50 amps	25 amps
Arc Sensors	2	2	2	2
Solar powered	✓	✓	✓	✓
Inside and Outside Cover Plate	03-OP	03-OP	03-OP	03-OP

For full accessories listing, please see page 562

CARRERA™ WELDING HELMET SERIES



0100



0110



0141



0171

CARRERA™ BENEFITS

- ▷ Unparalleled optical clarity and sensitivity reduces eye strain
- ▷ True Color Technology broadens viewable color range for better view of the weld pool
- ▷ Lightweight shell for all-day comfort
- ▷ Wider fit can accommodate an elastomeric half-mask underneath
- ▷ Solar-powered means no battery changes. Ever.

Available with different decal versions!

**ALL CARRERA™ HOODS INCLUDE**

On all auto-darkening lenses



Best-in-class optical clarity and sensitivity



Wide Dark Shade Range



Grind mode



Solar-powered



True Color Technology

	1000F-0100	4500V-0100
Best for:	Budget-friendly for welders who occasionally grind.	For welders who occasionally grind and appreciate a larger viewing area.
Viewing Area	6 sq. in.	7.1 sq. in.
Light Shade	4	4
Dark Shade Range	9-13	9-13
Variable Sensitivity	✓	✓
Variable Delay	✓	✓
Grind Mode	✓	✓
TIG Rating	25 amps	25 amps
Arc Sensors	2	4
Solar-Powered	✓	✓
Outside Cover Plate	04-OP	04-OP
Inside Cover Plate	03-OP	03-OP

For full accessories listing, please see page 562

VISION® WELDING HELMET SERIES



1500



1523



1555



1579

VISION BFFVX BENEFITS

- ▷ 17.05-square-inch viewing area improves weld pool vision as well as peripheral view of surroundings
- ▷ Unparalleled optical clarity and sensitivity
- ▷ X-TIG mode for welding when views are obstructed
- ▷ Slim fit design made for welding in tight areas
- ▷ Solar powered means no battery changes. Ever.
- ▷ USB charger for on-the-go charging
- ▷ Patented cover-plate quick-change system

**LARGEST
VIEWING AREA**



ALL VISION® HOODS INCLUDE



Best-in-class optical clarity and sensitivity



Wide Dark Shade Range



HD Technology



Patented cover-plate Quick Release system



Solar-powered



On all auto-darkening lenses



16-HG

NEW!
Vision® helmet improved headgear!

INCREASED COMFORT FOR THE WELDER

ArcOne®'s new and improved headgear includes a comfort gel pad specially designed for all-day wear.

For BFFVX and X81VX only

	X54V-1500	X54VI-1500	X81VX-1500	BFFVX-1500
Best for:	Professional-grade; for welders who TIG weld and like clear vision	Professional-grade; budget friendly for welders who perform wide range of tasks and like clear vision	Industrial-grade; for welders working of complex varied projects. This is ArcOne®'s most premium hood.	Industrial-grade; for welders working of complex varied projects requiring good vision.
Viewing Area	7.25 sq. in.	7.25 sq. in.	12.6 sq. in	17.05 sq. in
HD Technology				
Light Shade	4	4	3	3
Dark Shade	9-13	5-14	5-14	5-13
Variable Sensitivity	✓	✓	✓	✓
Variable Delay	✓	✓	✓	
X-TIG®			✓	✓
Grind Mode	✓	✓	✓	✓
TIG Rating	5 amps	5 amps	< 5 amps	5 amps
Arc Sensors	2	4	5	3
Digital	✓	✓	✓	
Solar powered	✓	✓	✓	✓ (Also includes USB charger)
Outside Cover Plate	02-OP	02-OP	02-OP	02-OP
Inside Cover Plate	08-IP	08-IP	04-OP	02-OP

For full accessories listing, please see page 562

ORBIT™ WELDING HELMET



Three high-definition auto-darkening lenses provide optimal peripheral vision

ORBIT™ BFFVX3 BENEFITS

- ▷ 24-square-inch viewing area thanks to 3 lenses that improve peripheral view of surroundings
- ▷ External controls for shade adjustment and grind mode
- ▷ Unparalleled optical clarity and sensitivity
- ▷ X-TIG mode for welding when views are obstructed
- ▷ Wider-fit design made for comfortable welding
- ▷ Solar-powered
- ▷ USB charger included for on-the-go back-up charging

ORBIT™ HOODS INCLUDE



On all auto-darkening lenses



Best-in-class optical clarity and sensitivity



Wide Dark Shade Range



HD Technology



Grind mode



Solar-powered

Order No.	BFFVX3-1800
Best for:	Industrial-grade; for welders needing great peripheral vision
Viewing Area	24 sq. in.
HD Technology	✓
Light Shade	3
Dark Shade Range	5-13
Side Windows Dark Shade	6
Variable Sensitivity	✓ external controls
Variable Delay	0.1 to 2 seconds
X-TIG	✓
Grind Mode	✓ external controls
TIG Rating	< 5 amps
Arc Sensors	3
Digital	✓
Solar-Powered	✓
Outside Cover Plate	10-OP
Inside Main Cover Plate	02-OP
Inside Side Cover Plates	11-IP

For full accessories listing, please see page 562



**INCLUDES RACHET HEADGEAR
WITH INTEGRATED GEL PAD
FOR ADDED COMFORT**

ACCESSORIES

ArcOne®'s standard-size cover plates are lightweight and can be used in most standard-sized welding helmets.

Can also be used with other manufacturer's helmets.

INSIDE AND OUTSIDE COVER PLATES

Order No.	Order No for pack of 10	Description	Compatible lens	Compatible Helmets*
02-OP	02-OP-10	For inside and outside	S450, S540, X450V	Vision® Series
02-OP	02-OP-10	For outside	X54V, X54Vi	Vision® Series
03-OP	03-OP-10	For inside and outside	S240, S240-10/11, S240-11/12, SS240	Hawk® Series
04-OP	04-OP-10	For inside	X81VX	Vision® Series
04-OP	04-OP-10	For outside	1000F, 4500V	Carrera™ Series
08-IP		For inside	X54V, X54Vi	Vision® Series
10-OP		For outside	BFFVX3	Orbit™ Series
02-OP		For inside main lens	BFFVX3	Orbit™ Series
11-IP		For inside side lenses	BFFVX3	Orbit™ Series

*Cover plates can be used with any standard-size welding helmet.



02-OP

INSIDE COVER PLATE SHADE UPGRADES

Order No.	Description
03IP-1	Passive Shade 1 Upgrade for 2 x 4" helmets
03IP-2	Passive Shade 2 Upgrade for 2 x 4" helmets
02IP-1	Passive Shade 1 Upgrade for 4 x 5" and 5 x 4" helmets
02IP-2	Passive Shade 2 Upgrade for 4 x 5" and 5 x 4" helmets
04IP-1	Passive Shade 1 Upgrade for Carrera™ ArcOne® 90 x 110 mm helmets (04-OP-1)
04IP-2	Passive Shade 2 Upgrade for Carrera™ ArcOne® 90 x 110 mm helmets (04-OP-2)

ArcOne® headgears and sweat bands can be retrofit into any ArcOne® welding helmet to get you the perfect, customized fit.



03-HGSB AND 06-HGSB-2

HEADGEARS AND SWEATBANDS

Order No.	Description
03-HGSB	FatBoy® Ultra-absorbent sweatband
04-HG	Economical ratchet headgear with cloth sweatband
04-HGSB-5	Lightweight felt sweatbands (5-Pack)
06-HG	ComfaGear® ratchet headgear with deluxe sweatband
06-HGSB-2	Deluxe sweatbands (2-Pack)
07-HGSB	Single rear felt sweatband
15-HG	ComfaGear® ratchet headgear with deluxe sweatband and large knobs
16-HG	Vision® headgear ratchet with added gel pad for added comfort
16-HGGP	Replacement gel pad for 16-HG



16-HG

ARCONE® DIOPTER/CHEATER LENSES

- ▷ The Standard Magnifying Lens is perfect for helmets like the Vision® that have a built-in mag lens holder
- ▷ The Universal Magnifying Lens replaces your 2 x 4" rear cover plate, ideal with our Carrera™ ArcOne® welding helmet, or with the mounts for any manufacturer's 5 x 4" or 4 x 5" welding helmets



UML-300

STANDARD MAGNIFYING LENS

(Mag lens holder required)

Order No.	Description
VML-100	1.00 Strength
VML-150	1.50 Strength
VML-200	2.00 Strength
VML-250	2.50 Strength

UNIVERSAL MAGNIFYING LENS

(Fits all manufacturer's mount helmets, kit is included)

Order No.	Description
UML-100	1.00 Strength
UML-150	1.50 Strength
UML-200	2.00 Strength
UML-250	2.50 Strength
UML-300	3.00 Strength





ARCONE VISION® REPLACEMENT PARTS

Lens Model	Inside Cover Plates				Outside Cover Plate	Headgear					Sweatband			
	02-OP	04-OP	08-IP	02-IP-AF (Optional)		02-OP	04-HG	06-HG	15-HG	16-HG	04-HGSB-5	06-HGSB-2	07-HGSB	16-HGGP
BFFVX	✓			✓	✓					✓		✓		✓
X81VX		✓		✓						✓		✓		✓
X54V			✓	✓	✓		✓	✓				✓	✓	
X54VI			✓	✓	✓		✓	✓				✓	✓	
Passive				†	✓	✓					✓			

ARCONE® VISION® 911 REPLACEMENT PARTS

Lens type	Inside Cover Plate	Outside Cover Plate	Headgear	Sweatband
	03-OP	04-OP	04-HG	04-HGSB-5
ADF	✓	✓	✓	✓
Passive		✓	✓	✓

ARCONE® HAWK® REPLACEMENT PARTS

Lens type	Inside Cover Plate	Outside Cover Plate	Headgear	Sweatband
	03-OP	03-OP	04-HG	04-HGSB-5
ADF	✓	✓	✓	✓
Passive		✓	✓	✓

ARCONE® CARRERA™ REPLACEMENT PARTS

Lens type	Inside Cover Plate	Outside Cover Plate	Headgear	Sweatband	Center Section	Thumbscrew
	03-OP	04-OP	04-HG	04-HGSB-5	CAR-CS	CAR-SCR
ADF	✓	✓	✓	✓	✓	✓
Passive		✓	✓	✓	✓	✓

WALTER ORBIT™ REPLACEMENT PARTS

Lens Model	Inside Cover Plates		Outside Cover Plate	Headgear	Sweatband	
	11-IP (2 pack for side lenses)	02-OP (center lens)	10-OP	16-HG	Front	Rear
BFFVX3	✓	✓	✓	✓	06-HGSB-2	16-HGGP

WELDING ACCESSORIES



BAG-CANVAS-01



BAG-HELMET-01



CA-CAC-02



Order No.	Description
CG-01	Leather chin guard, flexible, protects chin and neck. One size fits all ArcOne® Helmets & most other Welding Helmets.
BAG-CANVAS-01	Canvas tool bag
CA-CAC-02	Polyester/Canvas duffel bag
BAG-HELMET-01	Nylon drawstring bag



CG-01
Helmet sold separately

BROWGUARDS & VISORS

- ▷ All models provide full face and eye protection against sparks, spatter, small particles, and non-hazardous liquids.
- ▷ Made for most work applications including grinding, cutting, brazing, and machining.
- ▷ Browguards offer a sleek, wrap around design that can be worn comfortably with impact resistant safety glasses
- ▷ Meet CSA Z94.3 standards



Cutting & Grinding						Brazing and plasma cutting	
Order No.	BG-FL	BG-1*	BG1-2CL*	BG2-2CL	BG4-K	BG-FF-5	BG-FF-8
Application	Entry-level, basic protection	Professional and industrial cutting & grinding		Industrial cutting & grinding, best face protection. Includes a chin guard (for BG4-K only).		Cutting & brazing	Plasma cutting
Dimensions	8 x 15 ½ x 0.04 in	16 x 8 x 0.06 in	16 x 9 x 0.06 in	16 x 9 x 0.06 in	16 x 9 x 0.06 in	16 x 9 x 0.06 in	16 x 9 x 0.06 in
Material	P.E.T.G.	Injection-moulded Polycarbonate				Injection-moulded Polycarbonate	
Crown Size	3 in	3 in	3 in	4 in	3 in	4 in	4 in
Headgear Material	HDPE	Nylon	Nylon	Nylon	Nylon	Nylon	Nylon
Ratchet Suspension	✓	✓	✓	✓	✓	✓	✓

* CSA approved.

DIMENSIONS

Larger visor dimensions provide more protection for ears, face and neck.

MATERIALS

Visor material; visors made from injection-moulded polycarbonate provide, better protection, longer life and are more resistant to scratching.

CROWN SIZE

Larger crown sizes provide more head protection.

HEADGEAR MATERIAL

Nylon provides longer life than HDPE.

BROWGUARDS & VISORS

AIRSHIELD®

Order No.	Description
AIR-SH	Airshield® High-Impact Grinding Visor (7" x 5.4" x .040")
AIR-HEL	Airshield® Replacement Shell
AIR-CL	Airshield® Visor (8.75" x 5.5" x .040") (2-Pack)
AIR-WHA-04	Adapter to attach ArcOne® welding helmet to Airshield® using 04-HG
AIR-WHA-10	Adapter to attach ArcOne® welding helmet to Airshield® using 15-HG
SUHHA-03	Hard hat Adapter, Slotted for V-Crown Hard hats



* does not meet CSA

AIR-SH
AIRSHIELD®

VISORS

ArcOne® visors provide the protection you need.

Visors are molded from strong polycarbonate (injection-moulded), not thin materials or materials that yellow over time. Visors are available in two different styles, a more traditional square-fit (168CL-PC) or a more rounded-fit for additional protection (2CL-PC). Visors come in clear, dark green, IR3 and IR5 shades. The 168 and 02 visors are CSA approved when used in combination with our BG1 Browguard. ArcOne® cost-performance durable visors fit most manufacturer browguards.

	Order No.	Size	Description
Rounded design Polycarbonate Injection-moulded	2CL-PC	16" x 9" x .060"	Clear (each)
	2CL-PC-50	16" x 9" x .060"	Clear, 50-Pack
	2DGN-PC	16" x 9" x .060"	Dark Green (each)
	2DGN-PC-50	16" x 9" x .060"	Dark Green, 50-Pack
Chin guard	FS-CH	N/A	Clear Polycarbonate chin guard for 2CL Visor
Square design polycarbonate Injection-moulded	168CL-PC	16" x 8" x .060"	Clear (each)
	168CL-PC-50	16" x 8" x .060"	Clear, 50-Pack
	168DG-PC	16" x 8" x .060"	Dark Green (each)
	168DG-PC-50	16" x 8" x .060"	Dark Green, 50-Pack
	168IR3-PC	16" x 8" x .060"	IR3 (each)
	168IR3-PC-50	16" x 8" x .060"	IR3, 50-Pack
	168IR5-PC	16" x 8" x .060"	IR5 (each)
	168IR5-PC-50	16" x 8" x .060"	IR5, 50-Pack
PETG - Flat stock	1910CL-PE-10	19" x 9.75" x .040"	Clear visor, 10-pack
	1910DG-PE-10	19" x 9.75" x .040"	Dark Green visor, 10-pack
	1910IR5-PE-10	19" x 9.75" x .040"	IR5 visor, 10-pack
PETG	FLV-0815040-10	8" x 15.5" x .040"	Clear FL visor, 10-Pack
	FLV-0815040-100	8" x 15.5" x .040"	Clear FL visor, 100-Box
	FLV-0815060-10	8" x 15.5" x .060"	Clear FL visor, 10-Pack
	FLV-0815060-100	8" x 15.5" x .060"	Clear FL visor, 100-Box



2CL-PC
CLEAR VISOR



168IR5-PC
IR5 VISOR



1910DG-PE
DARK GREEN PETG



FVL-0815060-10
CLEAR FL VISOR

HARD HATS

Our slotted hard hat is made from polyethylene and is offered with ratchet headgear.



White V-Crown Hard hat
w/ Vision® helmet
and SUHHA-02 adapter

Available V-CROWN Combinations:

- ▷ Welding Helmet
- ▷ Visor with FSHHA-01 Adapter

SMOOTH DOME

Type 1

Sleek and modern style is ideal for welding applications and attachments. Rain trough and slotted design high-density polyethylene shell to accommodate all the latest accessories such as hearing protection, face shields, forestry kits or welding protection. Ratchet adjustment to properly fit all head sizes large or small. Attachment points for chin straps. HH-T1 CSA Type 1 Class E and ANSI Type I Class E.



Order No.	Description	Color
HH-T1-OR	Safety hard hat Type 1	Orange
HH-T1-WR	Safety hard hat Type 1	White
HH-T1-YR	Safety hard hat Type 1	Yellow

V-CROWN

Type 2

Hard hat with HDPE shell with rain trough, foam liner, 4-point nylon suspension, ratchet adjustment and 4 anchor points for chin strap. Foam liner to offer added lateral front, side and back protection. HH-T2 CSA Type 2 Class E and ANSI Type II Class E.



Order No.	Description	Color
HH-T2-OR	Safety hard hat Type 2	Orange
HH-T2-WR	Safety hard hat Type 2	White
HH-T2-YR	Safety hard hat Type 2	Yellow

HARD HAT ADAPTERS

Order No.	Description
SUHHA-02	Hard hat adapter for welding helmet ArcOne®, MSA, North, Honeywell, Dynamic, and more
SUHHA-03	Hard hat adapter for welding helmet - Slotted for ArcOne® HH-VC series only
UHHA-01	Universal hard hat adapter (for non-slotted hard hats)
FSHHA-01	Universal hard hat adapter for visor
FSHHA-02	Hard hat slotted adapter for visor
FSHHA-03	Fibre-metal hard hat adapter for welding helmet



FSHHA-01
(168 Visor & HH
not included)



SUHHA-02



SUHHA-03



FSHHA-01



UHHA-01



FSHHA-03



FSHHA-02